

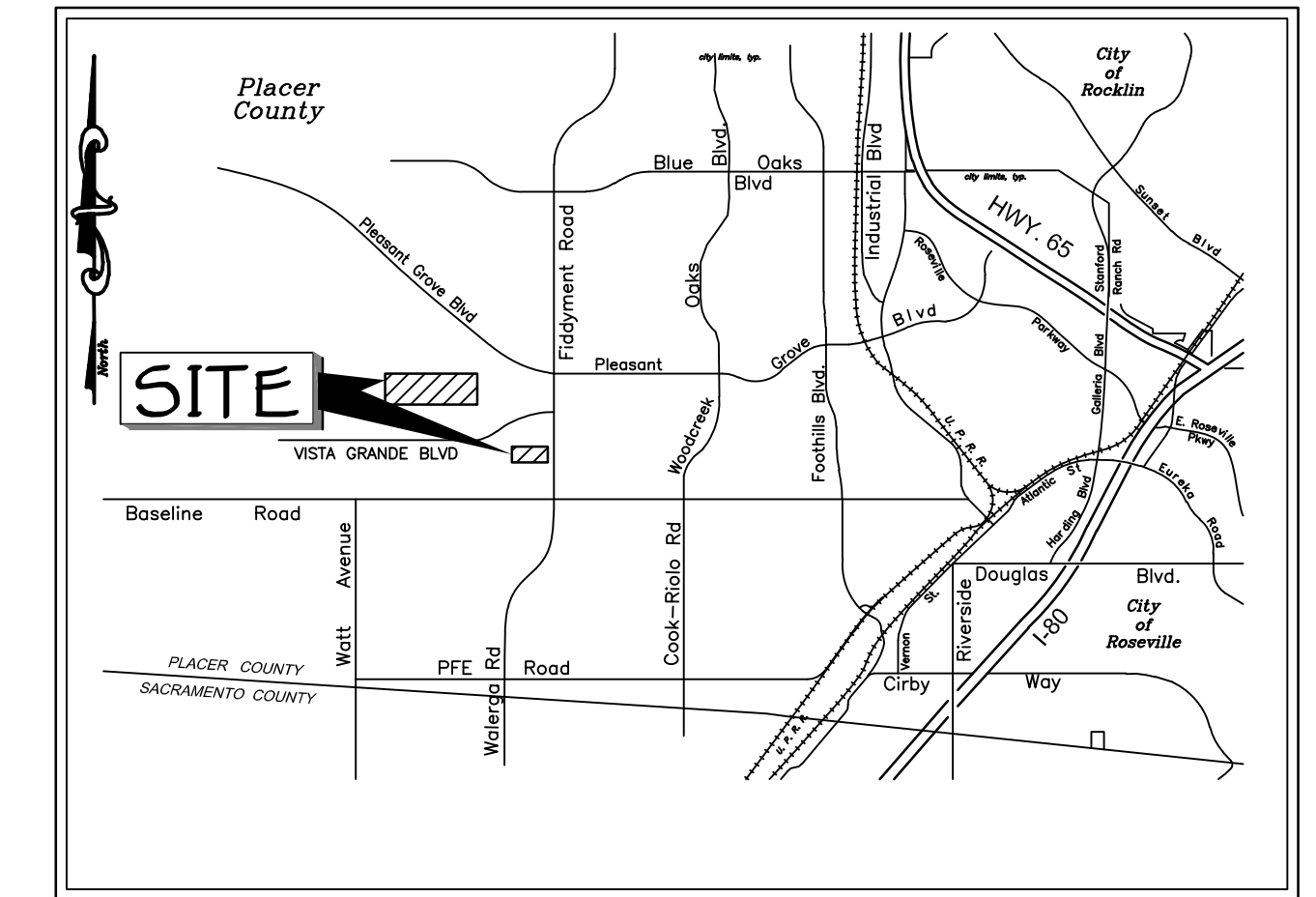
Tentative Large Lot Subdivision Map of:  
**A PORTION OF VILLAGE JM-20 AND FD-24 - SVSP**  
**LOTS 11 AND 12 PER 'DD' BM 26 AND LOT 43 PER 'EE' BM 6,**  
**LOCATED IN SECTION 36, T. 11 N., R. 5 E., M.D.M.**

City of Roseville,  
 Scale 1" = 100'

State of California  
 AUGUST 2019

Sheet 1 of 1

Project Address - 1520 Vista Grande Boulevard  
 File No. - PL17-0204



VICINITY MAP

**OWNERS:**  
 MOURIER INVESTMENTS, LLC  
 1430 BLUE OAKS BOULEVARD, SUITE 190  
 ROSEVILLE, CA 95747  
 PH. (916) 969-2842

**DEVELOPER:**  
 JOHN MOURIER CONSTRUCTION, INC.  
 1430 BLUE OAKS BOULEVARD, SUITE 190  
 ROSEVILLE, CA 95747  
 PH. (916) 969-2842

**ENGINEER:**  
 BAKER-WILLIAMS ENGINEERING GROUP  
 6020 RUTLAND DRIVE, SUITE 19  
 CARMICHAEL, CALIFORNIA 95608  
 PH. (916) 331-4336

**ASSESSOR'S PARCEL NUMBER:**  
 498-010-054, 055 & 498-020-038

**ACREAGE:**  
 29.7 ACRES

**PROPOSED IMPROVEMENTS:**  
 AS REQUIRED BY THE CITY OF ROSEVILLE  
 DEPARTMENT OF PUBLIC WORKS

**EXISTING USE:**  
 VACANT LAND

**SEWER:**  
 CITY OF ROSEVILLE

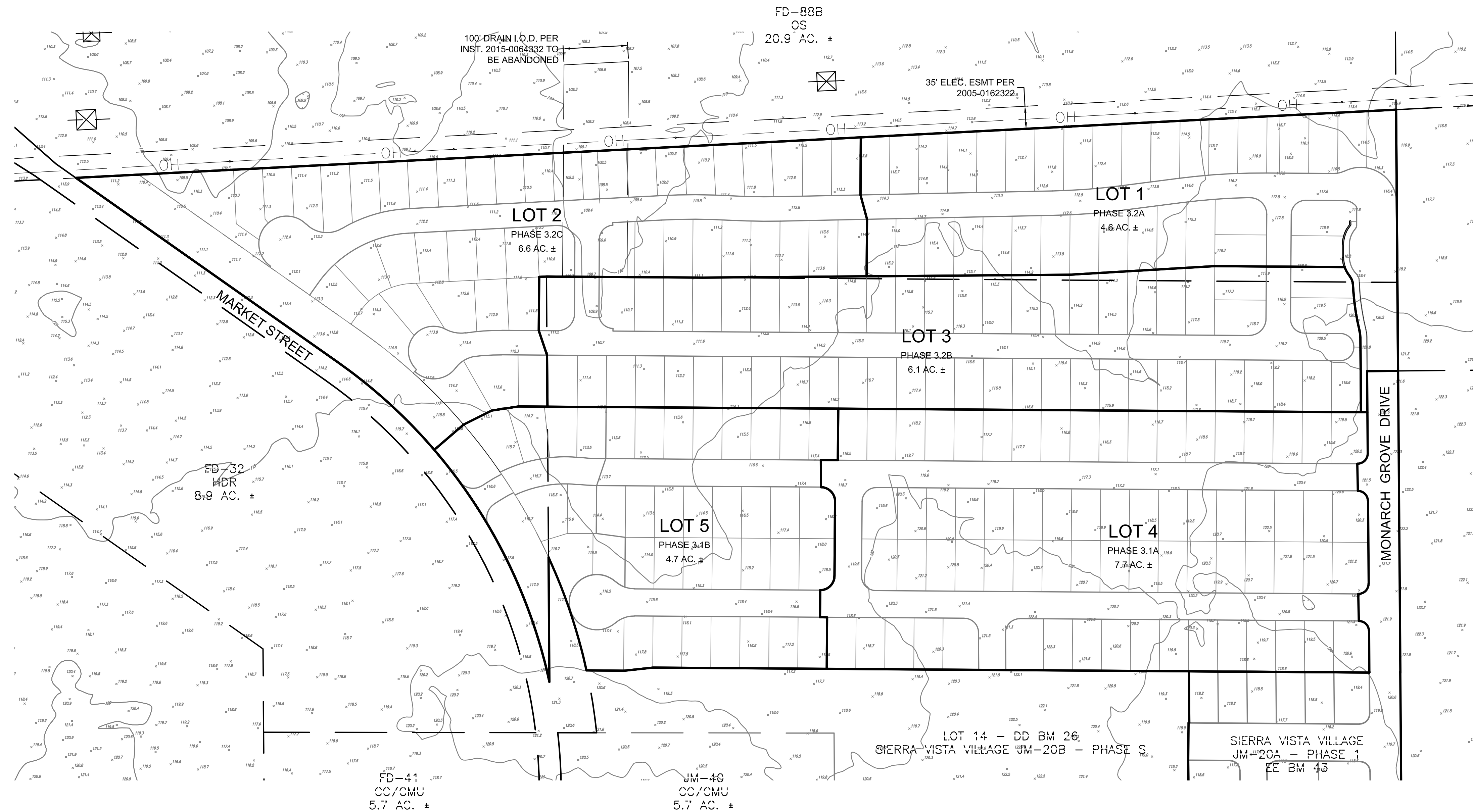
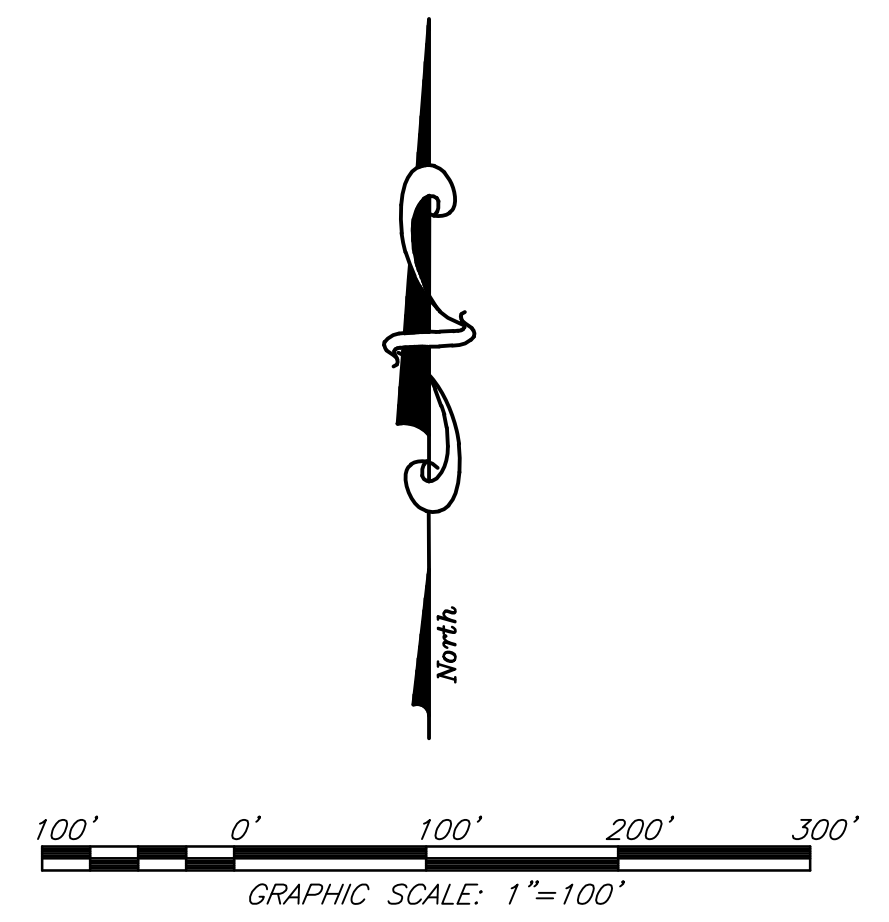
**WATER SUPPLY:**  
 CITY OF ROSEVILLE

**DRAINAGE:**  
 CITY OF ROSEVILLE

**FIRE PROTECTION:**  
 CITY OF ROSEVILLE

**SCHOOL DISTRICT:**  
 ROSEVILLE SCHOOL DISTRICT

**PARK DISTRICT:**  
 ROSEVILLE PARKS DISTRICT



JM-50  
 PARK  
 9.0 AC. ±

JM-61  
 SCHOOL  
 12.0 AC. ±



**JOHN MOURIER CONSTRUCTION INC.**  
 1430 Blue Oaks Blvd. Ste 190  
 Roseville, Ca 95747-7143  
 Office: 916-782-8879 Fax: 916-960-5322  
 CALIFORNIA LIC. 613004 B